

SE500LC

Our largest excavator

- ▶ Engine model: Cummins QSM11
- ▶ Rated power: 280 kW
- ▶ Operating weight: 49.5 t

Product features

*Superior performance

Shantui SE500LC hydraulic excavator is new generation of 50T excavator, positive flow controlled, powerful and reliable. The excellent design and performance will provide better drive experience for customers..

*Super adaptability to working conditions

Comprehensively optimize the design of structural parts, strengthen the treatment of key stress positions, without fear of severe working conditions; the bottom plate, side plate and reinforcement plate of the bucket are made of high-strength wear-resistant materials to improve the durability of the bucket; multi specification boom, stick and bucket are easily combined to adapt to various working conditions.

*Smarter

The intelligent control system realizes the high matching between the power system and the hydraulic system, improves the working efficiency and reduces the fuel consumption; four working modes make the switching convenient.

*Super easy maintenance

The engine oil filter element is far away from the right side door. The high-precision fuel filter element is centrally arranged at the left side door, which is convenient for maintenance; the coolant filling and air filter element replacement are within reach; the independent oil dispersion control can effectively avoid overheating in summer and supercooling in winter, and the cleaning is convenient.



shantui e-shop

SHANTUI

VALUE THAT WORKS

Shantui Construction Machinery Co., Ltd.

ADDRESS:
No. 58, G327 Highway
Jining City, Shandong, CHINA

TEL: +86-537-2909369
FAX: +86-537-2311219
EMAIL: trade@shantui.com

SE500LC

Technical specifications:

Minimum ground clearance: 600 mm

Overall length: 12110 mm







Operating weight: 49.5 t

Overall height: 3360 mm

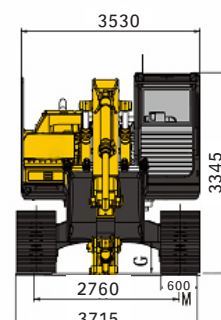
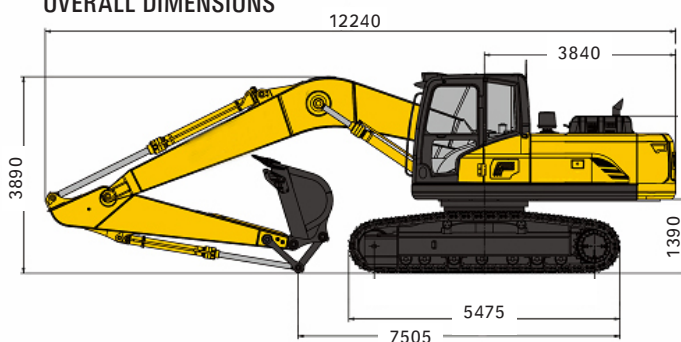
Ground pressure: 86 kPa

Overall width: 3655 mm

SE500LC

	ENGINE	Model	Cummins QSM11
		Type	High pressure and common rail, air-air intercooled, turbocharging
		Quantity of cylinders	6
		Bore x stroke	125 x 147 mm
		Displacement	10.8 L
		Power output	280 kW/2000 rpm
	HYDRAULIC SYSTEM	Pump	Imported
		Type	Double piston pump
		Maximum discharge flow	2 x 392 L/min
	TRAVEL SYSTEM	Travel motor	Variable axial piston motor
		Travel brakes	Lubricated double-disc
		Parking brake	Pressure release
		Travel shoes	2 x 49
		Travel speed	3.3/5.6 km/h
		Drawbar pulling force	364 kN
		Gradeability	70% (35°)
		Minimum ground clearance	590 mm
	OIL CAPACITY	Fuel tank	720 L
		Cooling system	24 L
		Engine oil	35 L
		Hydraulic oil tank	300 L
	SWING SYSTEM	Brake	Pressure Release Mechanical Braking
		Swing speed	9.5 rpm
		Tail swing radius	3840 mm
		Arm digging force	285 kN
		Bucket digging force	305 kN
	BUCKET	Bucket capacity	2.5 m ³
		Number of bucket teeth	5
		Bucket width	1876 mm
		Arm length	2.9 m
		Maximum digging reach/Maximum digging reach at ground level	10.975 m/10.745 m
		Maximum digging depth/height	7.815 m/10.785 m
		Maximum dumping height	7.6 m
		Minimum swing radius	4.37 m

OVERALL DIMENSIONS



▶ THE SPECIFICATIONS ARE SUBJECT TO CHANGE WITHOUT NOTICE. THE PICTURES MAY INCLUDE OPTIONS. THE ACTUAL COLOR & APPEARANCE OF THE PRODUCT MAY DIFFER FROM WHAT IS SHOWN.

WWW.SHANTUI.COM