

# SR32YR

Powerful, tough, durable and designed with value in mind

- ▶ Engine model: Cummins QSM11-C350
- ▶ Rated power: 250 kW/2100 rpm
- ▶ Operating weight: 32.0 t

## Product features

Designed for value durability and power specifically as a bulk waste management and landfill compactor, the 32-ton SR32YR features four-wheel drive, torque converter, power shift transmission, stepless speed regulation and articulated frame. For operator productivity and safety, its dual cab comes standard with air conditioning, heating, air purification devices and even a CD stereo. Powered by a Cummins QSM11-C350 engine.



# SHANTUI

VALUE THAT WORKS

Shantui Construction Machinery Co., Ltd.

ADDRESS:

No. 58, G327 Highway  
Jining City, Shandong, CHINA

TEL: +86-537-2909369

FAX: +86-537-2311219

EMAIL: [trade@shantui.com](mailto:trade@shantui.com)

# SR32YR

## Technical specifications:

Overall length: 8190 mm


Minimum turning radius: 7154 mm


Overall width: 4000 mm


Fuel capacity: 470 L


Overall height: 4254 mm

SR32YR

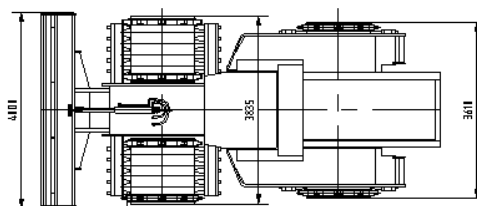
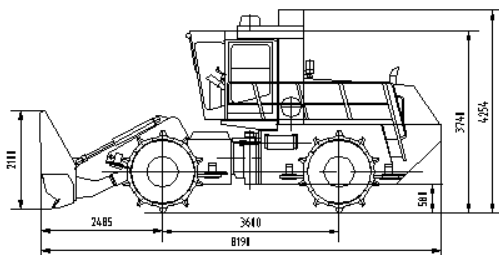
|   |                       |                           |                                |              |
|---|-----------------------|---------------------------|--------------------------------|--------------|
|  | WEIGHT AND DIMENSIONS | Weights                   | Operating weight               | 32000 kg     |
|   |                       |                           | Axle load, front               | 16000 kg     |
|   |                       |                           | Axle load, rear                | 16000 kg     |
|   |                       | Compaction characteristic | Static linear load, front/rear | 581/697 N/cm |
|   |                       |                           | Working width                  | -            |
|   |                       |                           | Drum diameter                  | 1700 mm      |
|   |                       | Wheelbase                 | 3600 mm                        |              |

|   |       |                        |                   |
|---|-------|------------------------|-------------------|
|  | BLADE | Maximum lifting height | 1200 mm           |
|   |       | Maximum cutting depth  | 200 mm            |
|   |       | Blade capacity         | 11 m <sup>3</sup> |

|  |                        |             |                          |                    |             |
|--|------------------------|-------------|--------------------------|--------------------|-------------|
|  | ENGINE AND DRIVE TRAIN | Engine      | Make & model             | Cummins QSM11-C350 |             |
|  |                        |             | Type                     | 6-125×147.1mm      |             |
|  |                        |             | Fuel                     | Diesel             |             |
|  |                        |             | Cooling                  | Water              |             |
|  |                        |             | Number of cylinders      | 6                  |             |
|  |                        |             | Rated power              | 250 kW             |             |
|  |                        |             | Rated speed              | 2100 rpm           |             |
|  |                        | Drive Train | Minimum ground clearance | 580 mm             |             |
|  |                        |             | Maximum climbing ability | 100%               |             |
|  |                        |             | Forward speed            | I                  | 0~3.4 km/h  |
|  |                        |             |                          | II                 | 0~11.5 km/h |
|  |                        |             | Reverse speed            | I                  | 0~3.4 km/h  |
| II   | 0~11.5 km/h            |             |                          |                    |             |

|   |                  |          |                          |                           |
|---|------------------|----------|--------------------------|---------------------------|
|  | CABIN & CONTROLS | Brakes   | Service brake            | Pressurized air braking   |
|   |                  |          | Parking brake            | Mechanical                |
|   |                  | Steering | Steering system          | Oscillating, articulating |
|   |                  |          | Steering method          | Hydrostatic               |
|   |                  |          | Steering angle (Grad)    | ±38°                      |
|   |                  |          | Oscillating angle (Grad) | ±15°                      |

### OVERALL DIMENSIONS



▶ THE SPECIFICATIONS ARE SUBJECT TO CHANGE WITHOUT NOTICE. THE PICTURES MAY INCLUDE OPTIONS. THE ACTUAL COLOR & APPEARANCE OF THE PRODUCT MAY DIFFER FROM WHAT IS SHOWN.